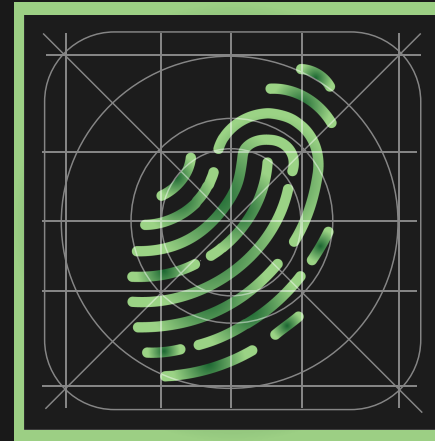


# Brand Guidelines

# Logo - logo mark

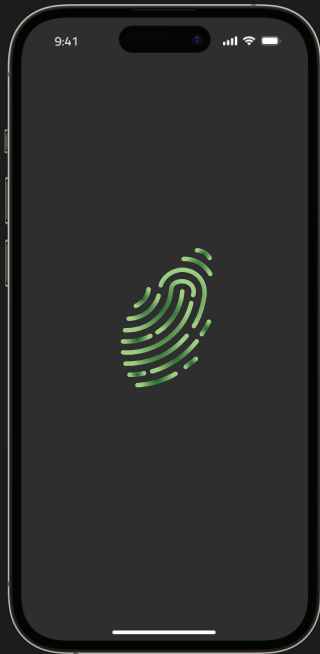


Logo mark can be used singularly in smaller spaces or for app icons, loading screens and display images. Stroke size, gradient and colour scheme must not be altered.



Ensure that the logo mark is centered and aligns to app icon grid. Keep icon positioned on a diagonal slant. Do not rotate or alter the position in any way.

# Logo - splash screen



Upon loading screens, the logo mark must be kept in the center of the screen. Avoid adding text to any splash or loading screens.

Logo animation may be used when loading in place of static image, but must not be sped up or slowed down. Once loaded, the icon should ease out, leading the user to the next screen.

## Logo - typographic logo



The logo mark must sit either above or to the left of the logo type. The logo mark must not be moved closer or further away from the typography, and the grid must be used to ensure that there is consistency and balance between the two elements

# Typography

**IVY EPIC  
VARIABLE**

ABCDEFGHIJKLMNOPQRSTUVWXYZ

abcdefghijklmnopqrstuvwxyz

1234567890!@;

# Typography across devices

## Mobile

Captions	7.45pt	IvyEpic Variable Light
Body	12pt	IvyEpic Variable Regular
Subheadings	19.32pt	IvyEpic Variable Medium
Headings	31.11pt	IvyEpic Variable SemiBold

## Tablet

Captions	9.32pt	IvyEpic Variable Light
Body	15pt	IvyEpic Variable Regular
Subheadings	24.5pt	IvyEpic Variable Medium
Headings	39.44pt	IvyEpic Variable SemiBold

# Typography - Colour Contrast

The quick brown fox jumps over the lazy dog

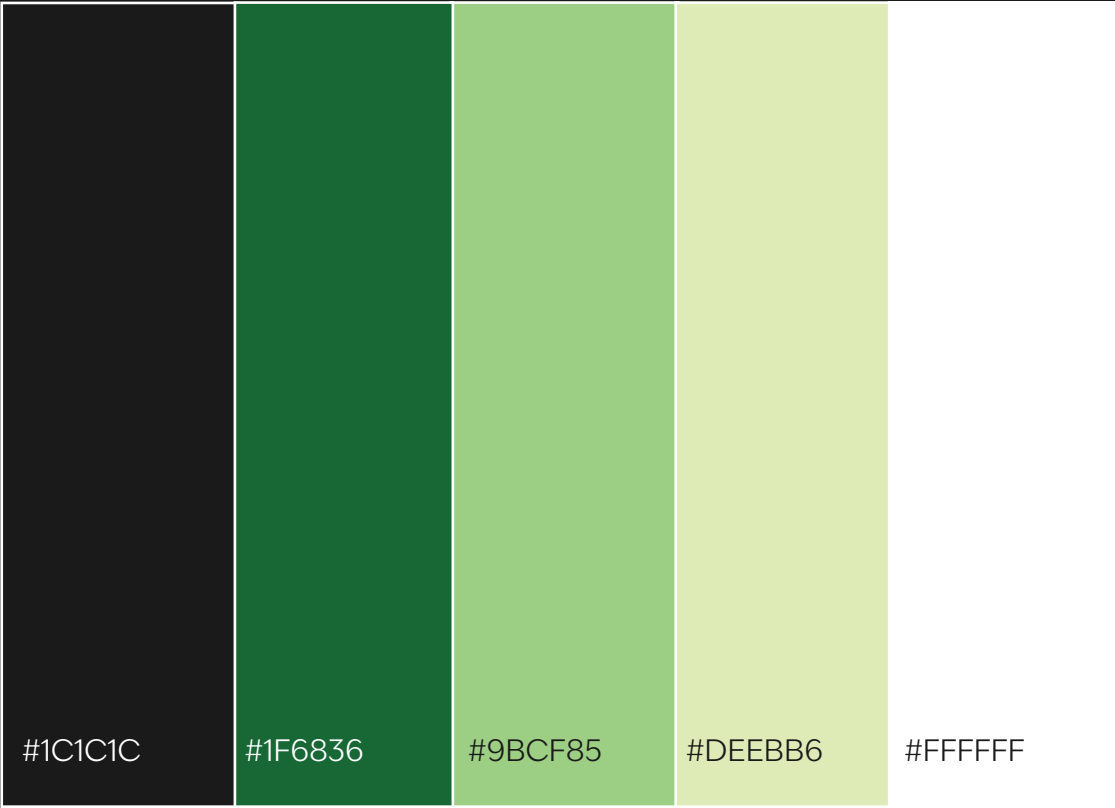
9.46:1 - Pass

The quick brown fox jumps over the lazy dog

2.2:1 - Fail

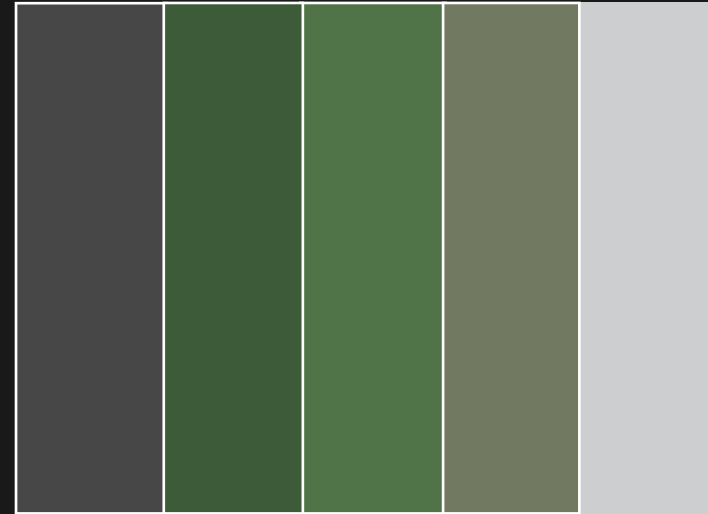
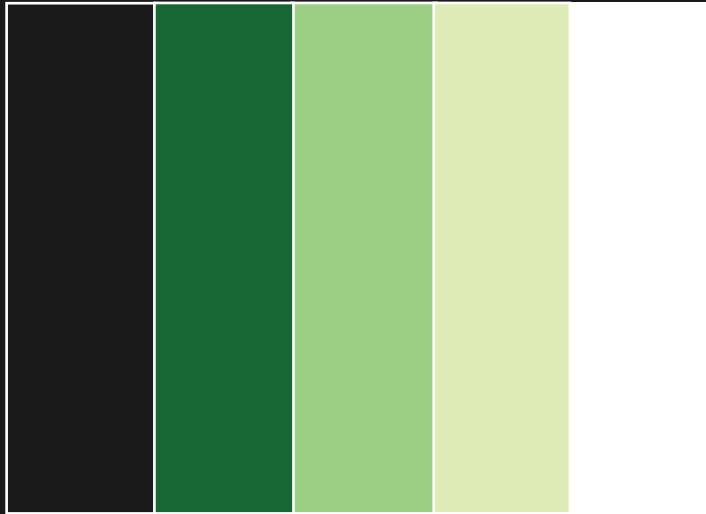
Contrast levels should be in adherence to WCAG 2.1 AAA colour contrast standards, and must not subceed a contrast level of 7:0 to ensure that text is visible and accessible to users.

# Colour Palette





# Colour Palette



Colours must not be altered in any way i.e: dulled, desaturated, saturated, etc. Other colours such as blues or reds, must not be used alongside the colour palette.